

### EDR Energy saving fan

The facts speak for themselves. 50% increase in fan efficiency. Reduction of energy requirements of 30%. Preserves the environment. Reduction of budget. In addition, regulation and control units can often be selected one size smaller.

#### Saves space

The high power density of the EDR favours compact dimensions. The fan housing is exactly the same as the duct connection. Additional mounting space is not required.

#### Saves money

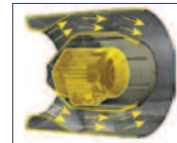
About 70% to 90% of the total costs of a fan are the cost of electricity. With the EDR, these are reduced by more than 30%! Even more - despite the superior product features, the EDR is astonishingly inexpensive.

- Mixed flow fan with guide vanes
- Integrated thermal contact
- Junction box with cable gland IP44
- Maintenance-free, long-life ball bearings



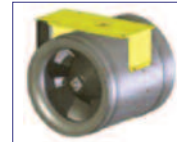
#### Complex blade contours

Give unique high fan efficiency with continuous meridian channel. Low energy transformation loss



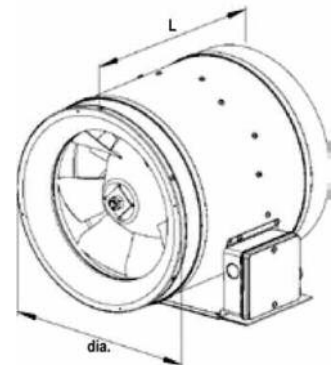
#### Motor protected in hub area

Motors do not have disruptive effect on air flow and are protected in the hub. In some instances the motor is completely separated from the airstream.

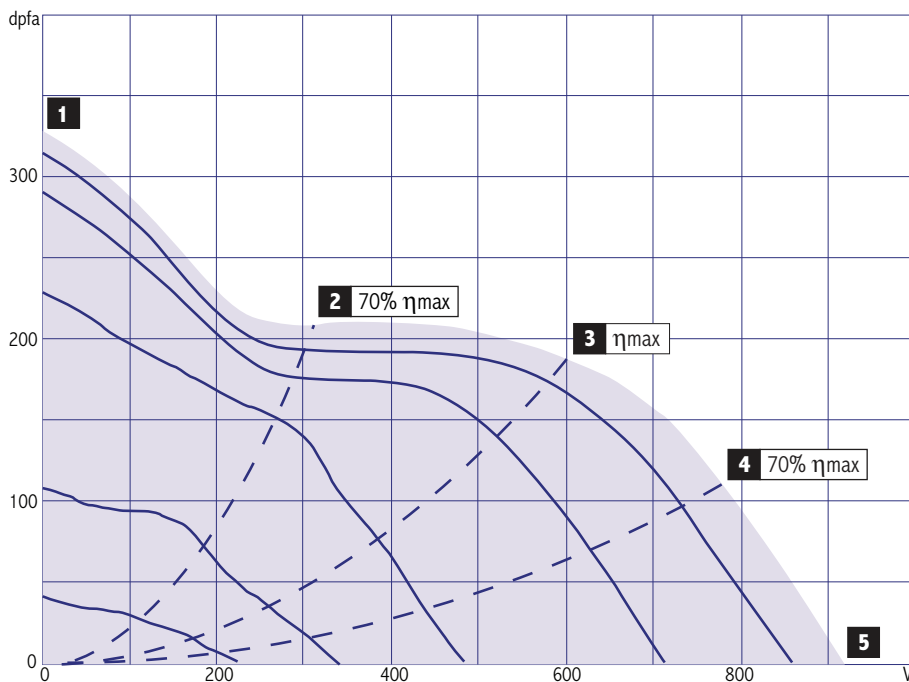


#### Mounting bracket

A stable mounting bracket is mounted to the fan

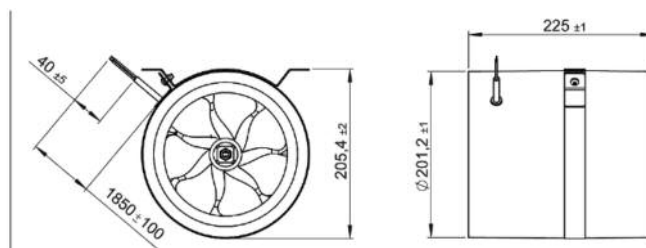
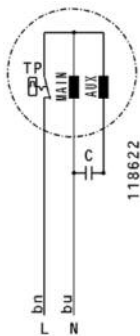


## Performance Curve EDR 20 E2













230V 50Hz

Operating Point		1	2	3	4	5
<b>Current</b>	I A	0.36	0.35	0.42	0.45	0.46
<b>Power Consumption</b>	P <sub>i</sub> W	80	75	90	100	105
<b>RPM</b>	n 1/min	2850	2870	2780	2740	2720
<b>SPL Inlet</b>	L <sub>WA5</sub> db (A)	-	72	71	70	72
<b>SPL Outlet</b>	L <sub>WA6</sub> db (A)	-	76	75	74	76
<b>SPL casing break out</b>	L <sub>WA2</sub> db (A)	-	60	59	58	57
<b>Voltage</b>	U <sub>N</sub>	230V~		<b>Speed Control</b>	V	
<b>Current</b>	I <sub>N</sub>	0.5 A		<b>Motor Protection</b>	TMI	
<b>Current</b>	I <sub>max</sub>	0.5 A		<b>Capacitor</b>	3,5μF / 450 V	
<b>Ambient Temperature</b>	t <sub>U</sub>	45°C		<b>Isolation Case</b>	F	
<b>Medium Temperature</b>	t <sub>F</sub>	45°C		<b>Poles</b>	2	
				<b>Weight</b>	2,9 kg	

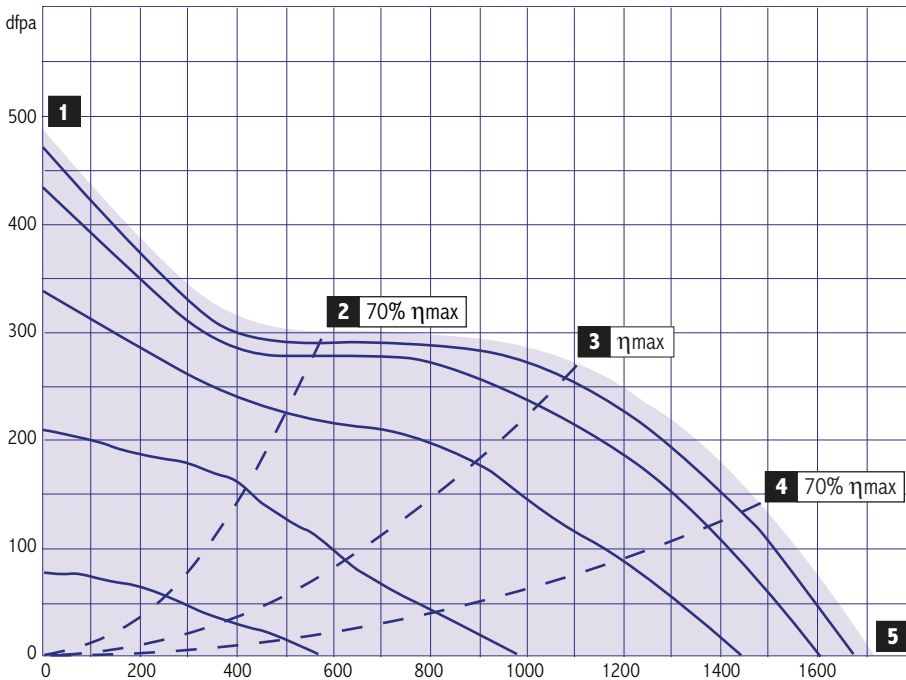


- Diagonal impeller with stator
- Plastic housing
- Speed controllable
- Integrated thermal switch
- Including mounting bracket

## Accessories for EDR 20 E2

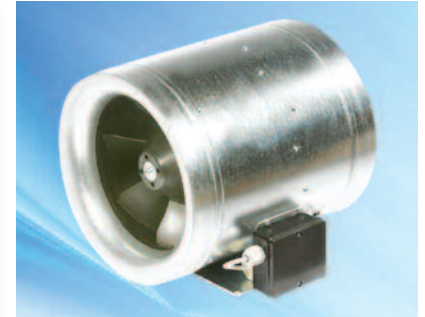
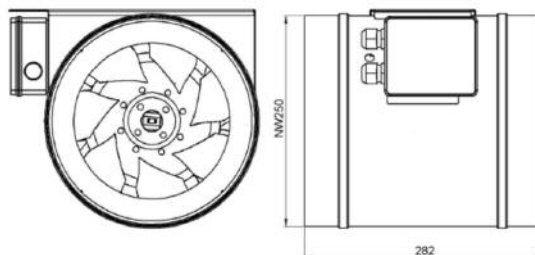
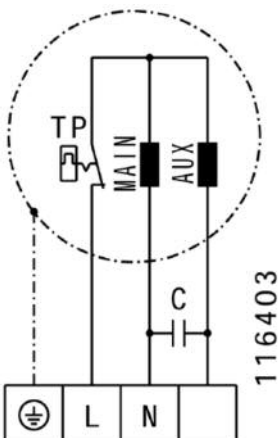
-  TEE 015  
**5-step Transformer**  
Without motor protection
-  TES 0145  
**7-step Transformer**  
Without motor protection
-  GS 01  
**Isolator Switch**
-  VM 200  
**Fast Clamps**  
For noise reduction and sealing
-  RSK 200  
**Back Draught Shutter**
-  RSK 200D  
**Back Draught Shutter**  
With seal
-  SG 200 02  
**Protection Grille**
-  SDS 200  
**Duct Silencer**  
Rigid
-  SDF 200  
**Duct Silencer**  
Flexible
-  FV 200  
**Filter Box**  
With mat filter G3
-  FT 200  
**Filter Box for Bag Filter**  
Without filter
-  FTW 200  
**Filter Box with Bag Filter F5**  
Integrated heating coil

**Performance Curve** EDR 25 E2



230V 50Hz

Operating Point		1	2	3	4	5
<b>Current</b>	I A	0.75	0.65	0.77	0.78	0.73
<b>Power Consumption</b>	P <sub>i</sub> W	170	145	180	180	170
<b>RPM</b>	n 1/min	2820	2870	2810	2840	2890
<b>SPL Inlet</b>	L <sub>WA5</sub> db (A)	-	74	71	72	75
<b>SPL Outlet</b>	L <sub>WA6</sub> db (A)	-	78	75	77	79
<b>SPL casing break out</b>	L <sub>WA2</sub> db (A)	-	57	52	53	55
<b>Voltage</b>	U <sub>N</sub> 230V ~	<b>Speed Control</b>		V		
<b>Current</b>	I <sub>N</sub> 0.8 A	<b>Motor Protection</b>		TMI		
<b>Current</b>	I <sub>max</sub> 1.0 A	<b>Capacitor</b>		6 μF /400 V		
<b>Ambient Temperature</b>	t <sub>U</sub> 55°C	<b>Isolation Case</b>		F		
<b>Medium Temperature</b>	t <sub>F</sub> 55°C	<b>Poles</b>		2		
		<b>Weight</b>		6,35 kg		

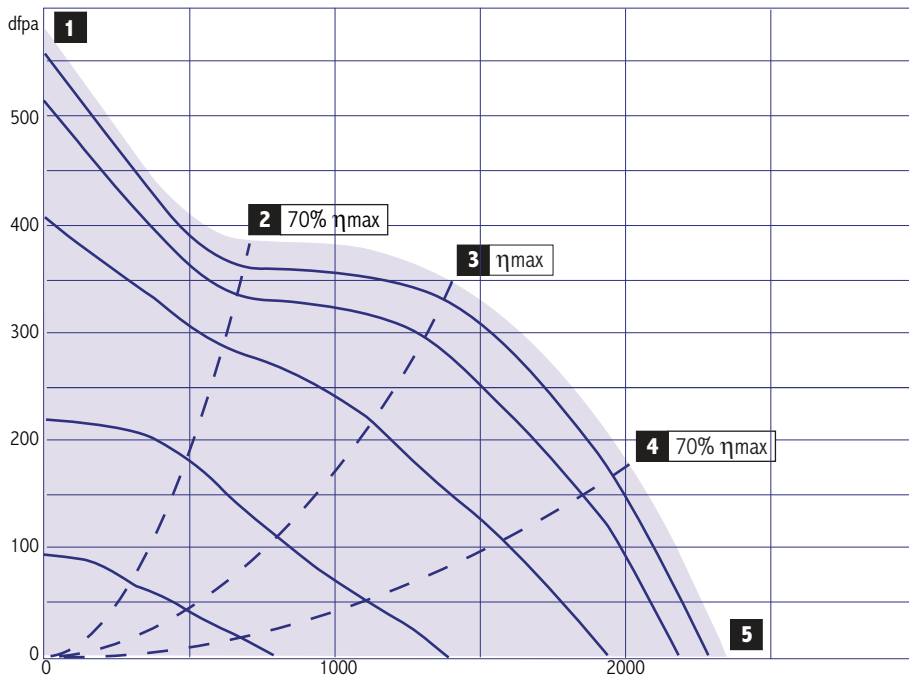


- Diagonal impeller with stator
- Galvanised metal housing
- Speed controllable
- Integrated thermal switch
- Including mounting bracket

**Accessories for EDR 25 E2**

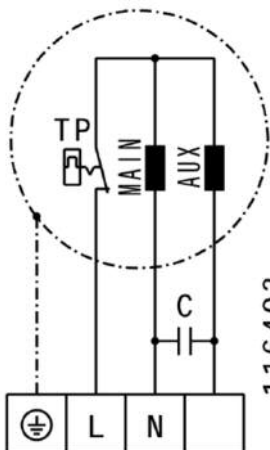
- TEE 015  
**5-step Transformer**  
Without motor protection
- TES 0145  
**7-step Transformer**  
Without motor protection
- GS 01  
**Isolator Switch**
- VM 250  
**Fast Clamps**  
For noise reduction and sealing
- RSK 250  
**Back Draught Shutter**
- RSK 250D  
**Back Draught Shutter**  
With seal
- SG 250 01  
**Protection Grille**
- SG 250 02  
**Protection Grille**
- SDS 250  
**Duct Silencer**  
Rigid
- SDF 250  
**Duct Silencer**  
Flexible
- FV 250  
**Filter Box**  
With mat filter G3
- FT 250  
**Filter Box for Bag Filter**  
Without filter

**Performance Curve** EDR 28 E2

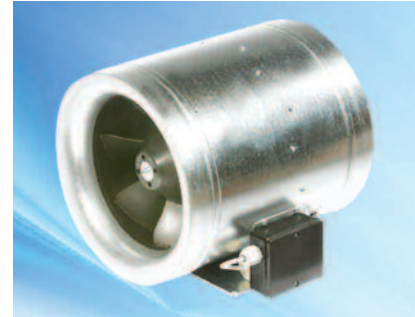
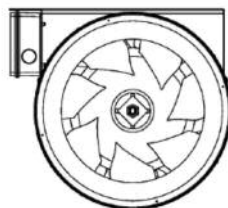


230V 50Hz

Operating Point		1	2	3	4	5
<b>Current</b>	I A	1.08	0.91	1.15	1.20	1.11
<b>Power Consumption</b>	P <sub>i</sub> W	240	210	260	270	250
<b>RPM</b>	n 1/min	2840	2880	2820	2820	2840
<b>SPL Inlet</b>	L <sub>WA5</sub> db (A)	-	78	76	76	79
<b>SPL Outlet</b>	L <sub>WA6</sub> db (A)	-	82	82	80	82
<b>SPL casing break out</b>	L <sub>WA2</sub> db (A)	-	63	62	56	58
<b>Voltage</b>	U <sub>N</sub>	230V~		<b>Speed Control</b>	V	
<b>Current</b>	I <sub>N</sub>	1.2 A	<b>Motor Protection</b>	TMI		
<b>Current</b>	I <sub>max</sub>	1.6 A	<b>Capacitor</b>	8 μF /450 V		
<b>Ambient Temperature</b>	t <sub>U</sub>	55°C		<b>Isolation Case</b>	F	
<b>Medium Temperature</b>	t <sub>F</sub>	55°C		<b>Poles</b>	2	
				<b>Weight</b>	8,3 kg	



116403

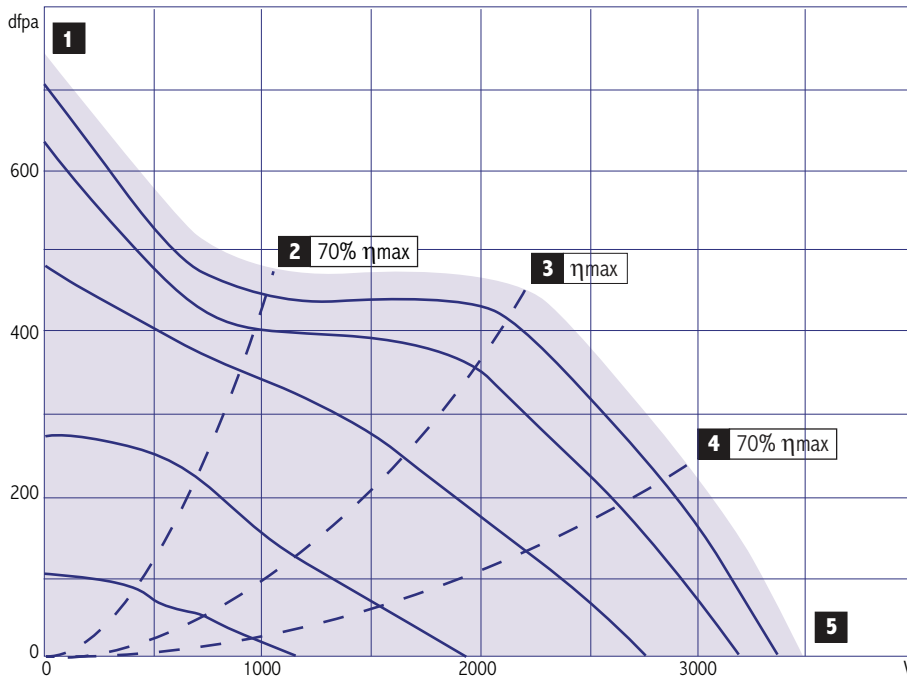


- Diagonal impeller with stator
- Plastic housing
- Speed controllable
- Integrated thermal switch
- Including mounting bracket

**Accessories for EDR 28 E2**

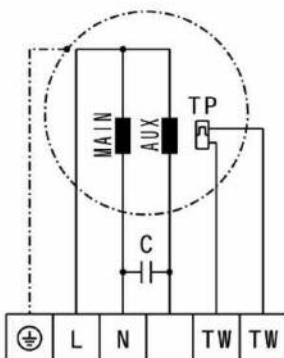
- TEM 035 **5-step Transformer**  
With motor protection
- TES 035 **7-step Transformer**  
Without motor protection
- GS 01 **Isolator Switch**
- VM 280 **Fast Clamps**  
For noise reduction and sealing
- SG 280 02 **Protection Grille**
- SDS 280 **Duct Silencer**  
Rigid
- UKR 5030 02 **Adapter Plate**  
Rectangular/round duct

**Performance Curve EDR 31 E2**

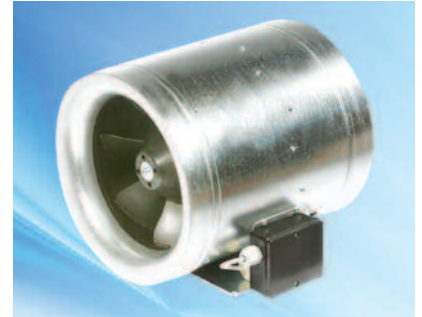
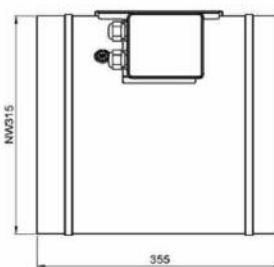
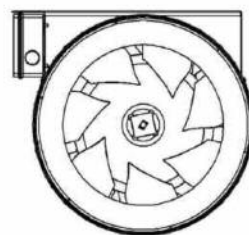


230V 50Hz

Operating Point		1	2	3	4	5
<b>Current</b>	I A	2.04	1.63	2.28	2.27	2.05
<b>Power Consumption</b>	P <sub>1</sub> W	460	370	510	510	460
<b>RPM</b>	n 1/min	2790	2850	2760	2760	2800
<b>SPL Inlet</b>	L <sub>WA5</sub> db (A)	-	80	76	77	81
<b>SPL Outlet</b>	L <sub>WA6</sub> db (A)	-	85	82	83	85
<b>SPL casing break out</b>	L <sub>WA2</sub> db (A)	-	63	60	61	63
<b>Voltage</b>	U <sub>N</sub>	230V~		<b>Speed Control</b>		V
<b>Current</b>	I <sub>N</sub>	2.3 A	<b>Motor Protection</b>		TMO	
<b>Current</b>	I <sub>max</sub>	3.2 A	<b>Capacitor</b>		10 μF /400 V	
<b>Ambient Temperature</b>	t <sub>U</sub>	55°C	<b>Isolation Case</b>		F	
<b>Medium Temperature</b>	t <sub>F</sub>	55°C	<b>Poles</b>		2	
<b>Weight</b>						14,15 kg



116495

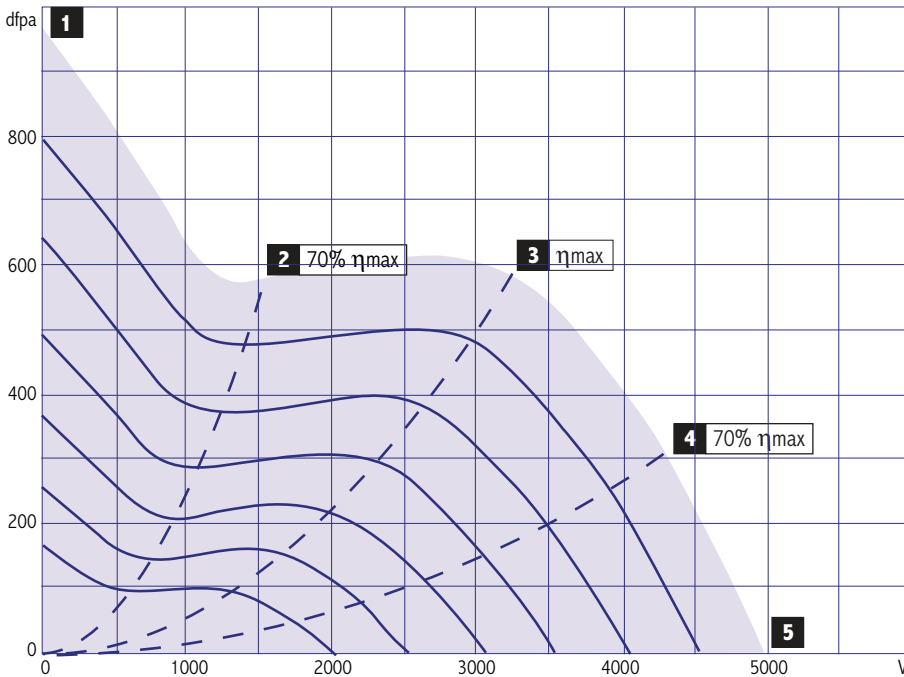


- Diagonal impeller with stator
- Plastic housing
- Speed controllable
- Integrated thermal switch
- Including mounting bracket

**Accessories for EDR 31 E2**

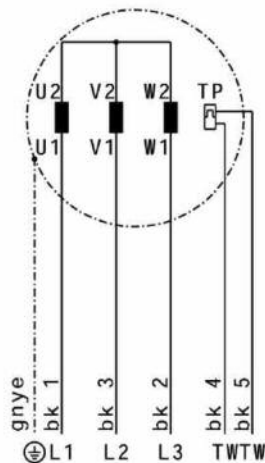
- TEM 035 **5-step Transformer**  
With motor protection
- TES 035 **7-step Transformer**  
Without motor protection
- GS 01 **Isolator Switch**
- VM 315 **Fast Clamps**  
For noise reduction and sealing
- RSK 315 **Back Draught Shutter**
- RSK 315D **Back Draught Shutter**  
With seal
- SG 315 01 **Protection Grille**
- SG 315 02 **Protection Grille**
- SDS 315 **Duct Silencer**  
Rigid
- SDF 315 **Duct Silencer**  
Flexible
- FV 315 **Filter Box**  
With mat filter G3
- FT 315 **Filter Box for Bag Filter**  
Without filter

**Performance Curve** EDR 35 D2

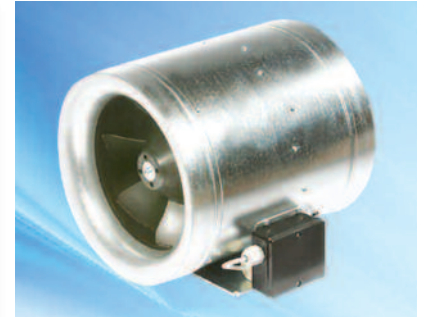
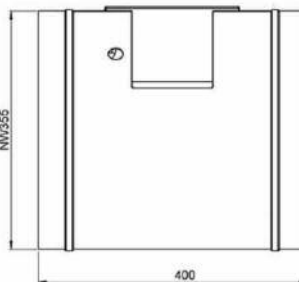
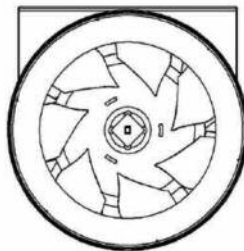


230V 50Hz

Operating Point		1	2	3	4	5
<b>Current</b>	I A	2.56	2.15	3.04	2.99	2.73
<b>Power Consumption</b>	P <sub>1</sub> W	780	610	910	900	800
<b>RPM</b>	n 1/min	2870	2910	2860	2860	2890
<b>SPL Inlet</b>	L <sub>WA5</sub> db (A)	-	86	80	82	85
<b>SPL Outlet</b>	L <sub>WA6</sub> db (A)	-	90	86	88	90
<b>SPL casing break out</b>	L <sub>WA2</sub> db (A)	-	72	66	67	70
<b>Voltage</b>	U <sub>N</sub> 230V 3~Y	<b>Speed Control</b>		Hz		
<b>Current</b>	I <sub>N</sub> 3.1 A	<b>Motor Protection</b>		TAO		
<b>Current</b>	I <sub>max</sub> 3.2 A	<b>Capacitor</b>				
<b>Ambient Temperature</b>	t <sub>U</sub> 60°C	<b>Isolation Case</b>		F		
<b>Medium Temperature</b>	t <sub>F</sub> 60°C	<b>Poles</b>		2		
		<b>Weight</b>		17,5 kg		



117676

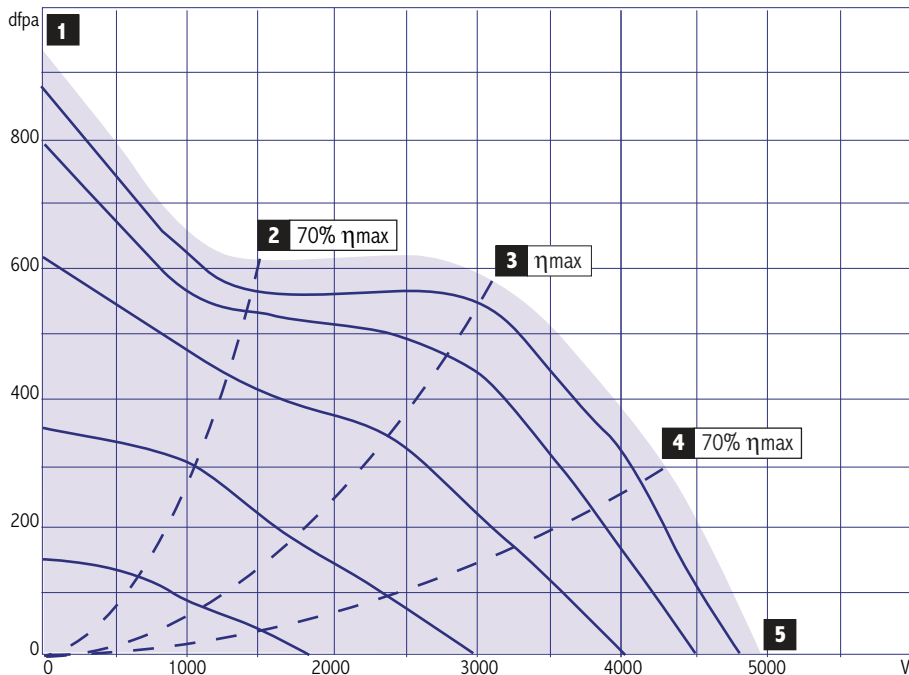


- Diagonal impeller with stator
- Galvanised metal housing
- Speed controllable
- Integrated thermal switch
- Including mounting bracket

**Accessories for EDR 35 D2**

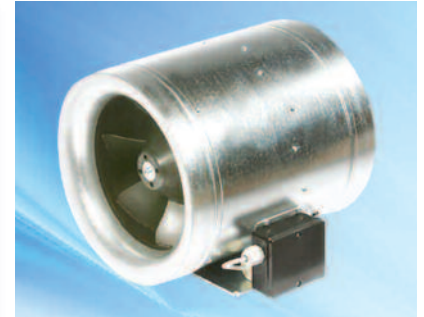
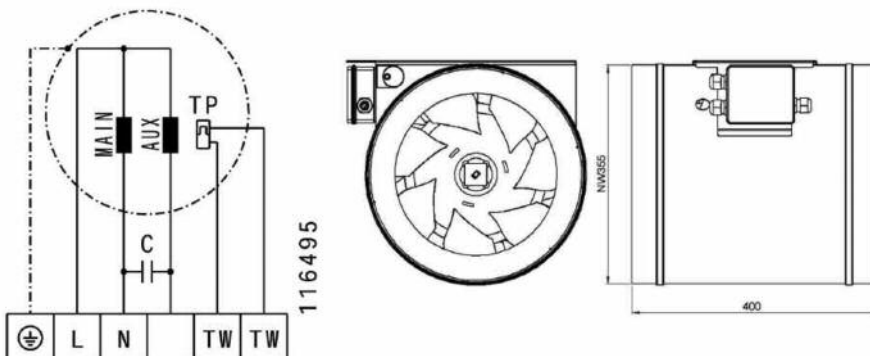
- GS 01 **Isolator Switch**
- FU 075 02 **Frequency Converter**
- FU 075 01 **Frequency Converter**
- VM 355 **Fast Clamps**  
For noise reduction and sealing
- RSK 355 **Back Draught Shutter**
- RSK 355D **Back Draught Shutter**  
With seal
- SG 355 02 **Protection Grille**
- SDS 355 **Duct Silencer**  
Rigid
- SDF 355 **Duct Silencer**  
Flexible
- FV 355 **Filter Box**  
With mat filter G3
- FT 355 **Filter Box for Bag Filter**  
Without filter
- FTW 355 **Filter Box with Bag Filter F5**  
Integrated heating coil

## Performance Curve EDR 35 E2














230V 50Hz

Operating Point		1	2	3	4	5
<b>Current</b>	I A	3.71	3.04	4.18	4.21	3.76
<b>Power Consumption</b>	P <sub>1</sub> W	840	690	950	950	860
<b>RPM</b>	n 1/min	2800	2850	2810	2760	2810
<b>SPL Inlet</b>	L <sub>WA5</sub> db (A)	-	82	79	80	84
<b>SPL Outlet</b>	L <sub>WA6</sub> db (A)	-	84	84	85	87
<b>SPL casing break out</b>	L <sub>WA2</sub> db (A)	-	64	63	64	49
<b>Voltage</b>	U <sub>N</sub>	230V ~		<b>Speed Control</b>	V	
<b>Current</b>	I <sub>N</sub>	4.3 A	<b>Motor Protection</b>	TMO		
<b>Current</b>	I <sub>max</sub>	5.4 A	<b>Capacitor</b>	22 μF /400 V		
<b>Ambient Temperature</b>	t <sub>U</sub>	45°C	<b>Isolation Case</b>	F		
<b>Medium Temperature</b>	t <sub>F</sub>	45°C	<b>Poles</b>	2		
			<b>Weight</b>	17,3 kg		

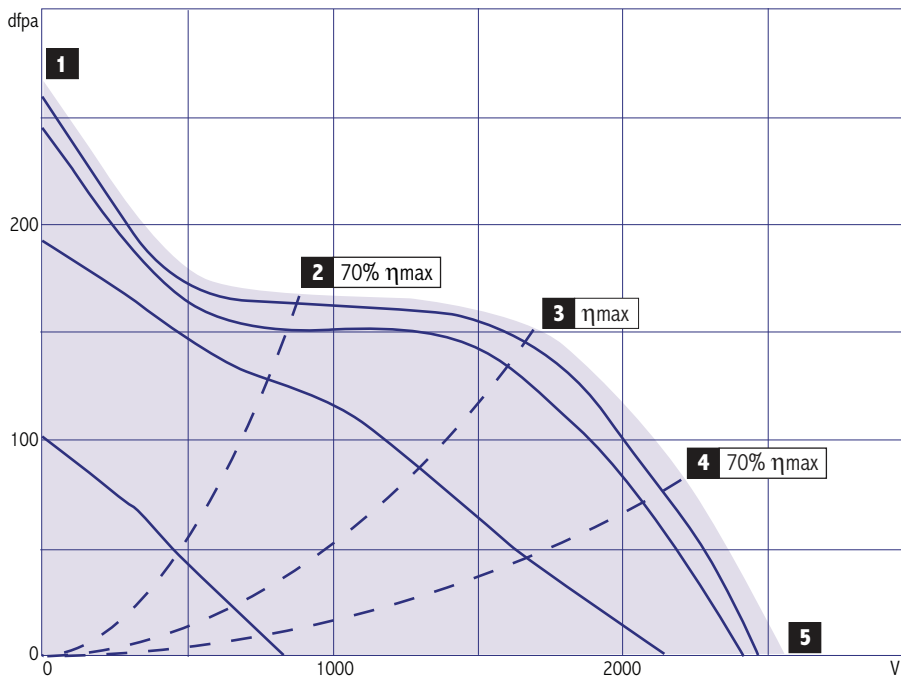


- Diagonal impeller with stator
- Galvanised metal housing
- Speed controllable
- Integrated thermal switch
- Including mounting bracket

## Accessories for EDR 35 E2

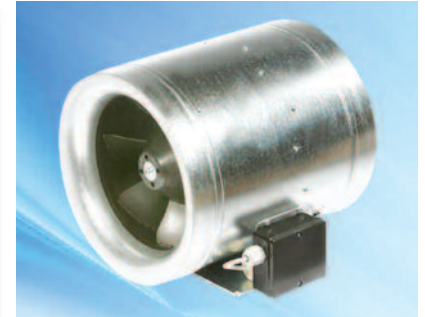
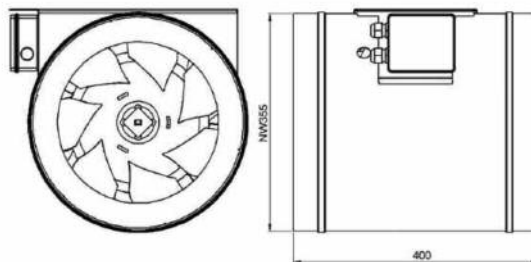
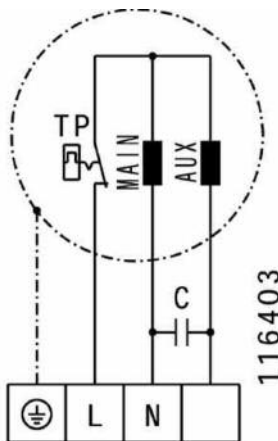
-  TEM 075  
**5-step Transformer**  
With motor protection
-  TES 075  
**7-step Transformer**  
Without motor protection
-  GS 01  
**Isolator Switch**
-  VM 355  
**Fast Clamps**  
For noise reduction and sealing
-  RSK 355  
**Back Draught Shutter**
-  RSK 355D  
**Back Draught Shutter**  
With seal
-  SG 355 02  
**Protection Grille**
-  SDS 355  
**Duct Silencer**  
Rigid
-  SDF 355  
**Duct Silencer**  
Flexible
-  FV 355  
**Filter Box**  
With mat filter G3
-  FT 355  
**Filter Box for Bag Filter**  
Without filter
-  FTW 355  
**Filter Box with Bag Filter F5**  
Integrated heating coil

**Performance Curve** EDR 35 E4



230V 50Hz

Operating Point		1	2	3	4	5	
<b>Current</b>	I A	0.65	0.57	0.68	0.68	0.62	
<b>Power Consumption</b>	P <sub>i</sub> W	150	125	150	150	140	
<b>RPM</b>	n 1/min	1450	1460	1440	1440	1450	
<b>SPL Inlet</b>	L <sub>WA5</sub> db (A)	-	68	64	66	69	
<b>SPL Outlet</b>	L <sub>WA6</sub> db (A)	-	71	67	69	72	
<b>SPL casing break out</b>	L <sub>WA2</sub> db (A)	-	52	48	48	52	
<b>Voltage</b>	U <sub>N</sub>	230V~		<b>Speed Control</b>		V	
<b>Current</b>	I <sub>N</sub>	0.7 A		<b>Motor Protection</b>		TMI	
<b>Current</b>	I <sub>max</sub>	1.2 A		<b>Capacitor</b>		4 μF /400 V	
<b>Ambient Temperature</b>	t <sub>U</sub>	60°C		<b>Isolation Case</b>		F	
<b>Medium Temperature</b>	t <sub>F</sub>	60°C		<b>Poles</b>		4	
						<b>Weight</b>	13,5 kg

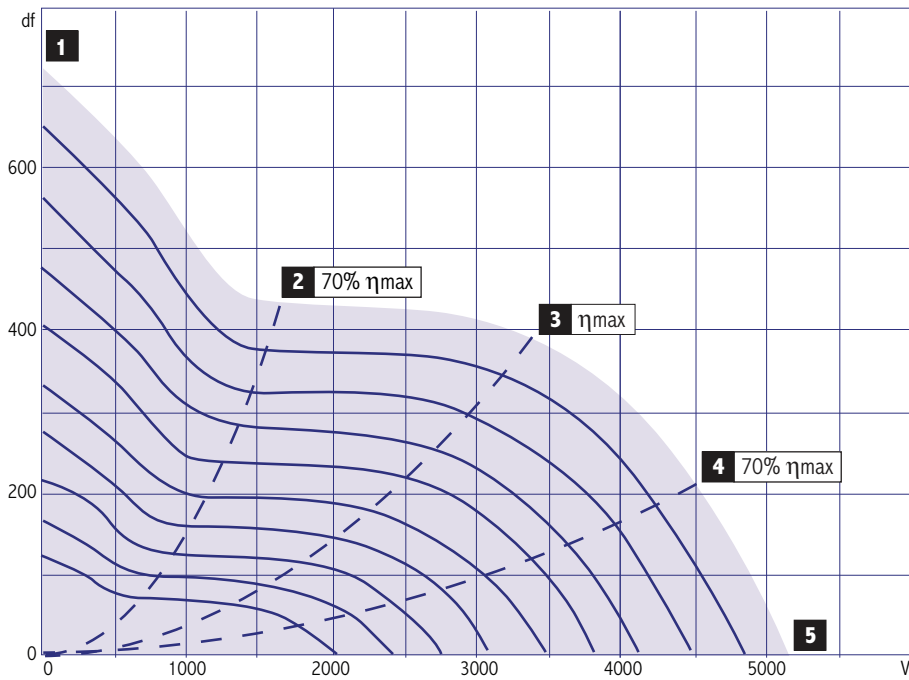


- Diagonal impeller with stator
- Plastic housing
- Speed controllable
- Integrated thermal switch
- Including mounting bracket

**Accessories for EDR 35 E4**

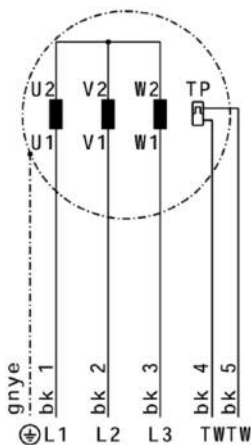
- TEE 015  
**5-step Transformer**  
Without motor protection
- TES 0145  
**7-step Transformer**  
Without motor protection
- GS 01  
**Isolator Switch**
- VM 355  
**Fast Clamps**  
For noise reduction and sealing
- RSK 355  
**Back Draught Shutter**
- RSK 355D  
**Back Draught Shutter**  
With seal
- SG 355 02  
**Protection Grille**
- SDS 355  
**Duct Silencer**  
Rigid
- SDF 355  
**Duct Silencer**  
Flexible
- FV 355  
**Filter Box**  
With mat filter G3
- FT 355  
**Filter Box for Bag Filter**  
Without filter
- FTW 355  
**Filter Box with Bag Filter F5**  
Integrated heater coil

Performance Curve EDR 40 D4

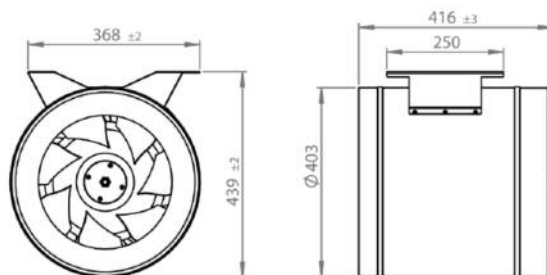


230V 75Hz

Operating Point		1	2	3	4	5
<b>Current</b>	I A	2.44	2.22	2.45	2.50	2.39
<b>Power Consumption</b>	P <sub>1</sub> W	600	480	620	650	580
<b>RPM</b>	n 1/min	2190	2200	2180	2180	2190
<b>SPL Inlet</b>	L <sub>WA5</sub> db (A)		88	80	85	85
<b>SPL Outlet</b>	L <sub>WA6</sub> db (A)		91	86	90	90
<b>SPL casing break out</b>	L <sub>WA2</sub> db (A)		77	68	71	72
<b>Voltage</b>	U <sub>N</sub> 230V 3~Y	<b>Speed Control</b>		Hz		
<b>Current</b>	I <sub>N</sub> 2.6 A	<b>Motor Protection</b>		TAO		
<b>Current</b>	I <sub>max</sub> 2.7 A	<b>Capacitor</b>		4		
<b>Ambient Temperature</b>	t <sub>U</sub> 80°C	<b>Isolation Case</b>		F		
<b>Medium Temperature</b>	t <sub>F</sub> 80°C	<b>Poles</b>		4		
<b>Weight</b>						14,8 kg



116460

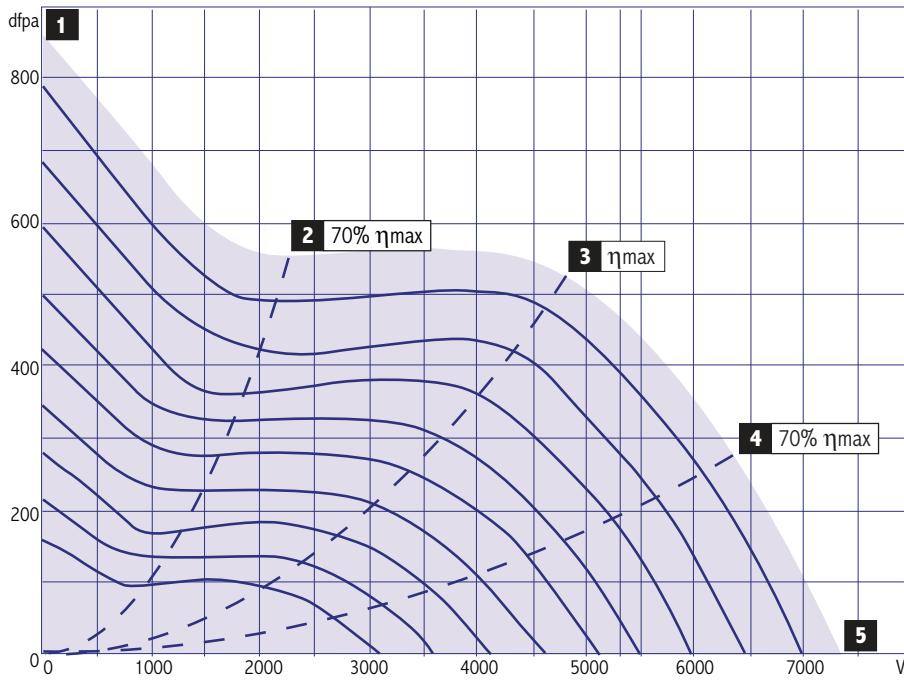


- Diagonal impeller with stator
- Casing of aluminium
- Speed controllable
- Integrated thermal switch
- Including mounting bracket

Accessories for EDR 40 D4

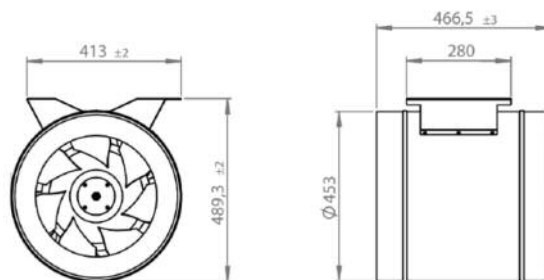
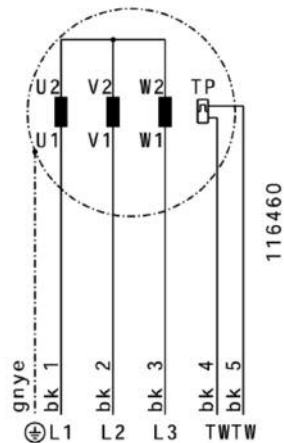
- GS 01  
**Isolator Switch**
- FU 075 02  
**Frequency Converter**
- FU 075 01  
**Frequency Converter**
- VM 400  
**Fast Clamps**  
For noise reduction and sealing

**Performance Curve** EDR 45 D4



230V 70Hz

Operating Point		1	2	3	4	5
<b>Current</b>	I A	3.80	3.14	4.18	4.16	3.70
<b>Power Consumption</b>	P <sub>1</sub> W	1070	850	1200	1190	1030
<b>RPM</b>	n 1/min	2110	2150	2090	2100	2130
<b>SPL Inlet</b>	L <sub>WA5</sub> db (A)	-	90	82	87	88
<b>SPL Outlet</b>	L <sub>WA6</sub> db (A)	-	93	87	91	92
<b>SPL casing break out</b>	L <sub>WA2</sub> db (A)	-	81	72	74	75
<b>Voltage</b>	U <sub>N</sub> 230V 3~Y	<b>Speed Control</b>		FU		
<b>Current</b>	I <sub>N</sub> 3.7 A	<b>Motor Protection</b>		TAO		
<b>Current</b>	I <sub>max</sub> 4.4 A	<b>Capacitor</b>		12 μF /400 V		
<b>Ambient Temperature</b>	t <sub>U</sub> 80°C	<b>Isolation Case</b>		F		
<b>Medium Temperature</b>	t <sub>F</sub> 80°C	<b>Poles</b>		4		
		<b>Weight</b>		18,85 kg		

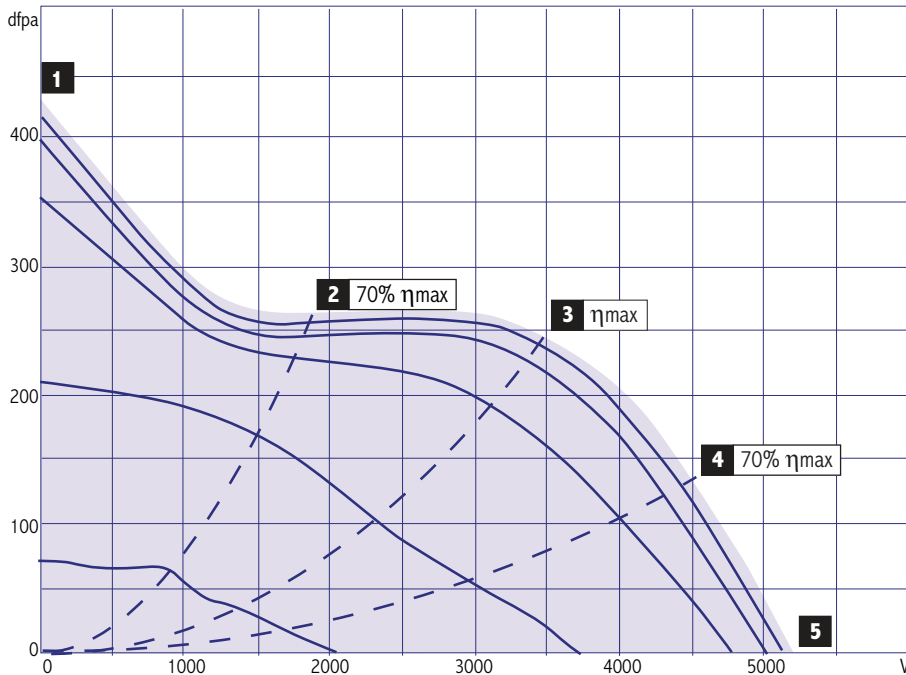


- Diagonal impeller with stator
- Casing of aluminium
- Speed controllable
- Integrated thermal switch
- Including mounting bracket

**Accessories for EDR 45 D4**

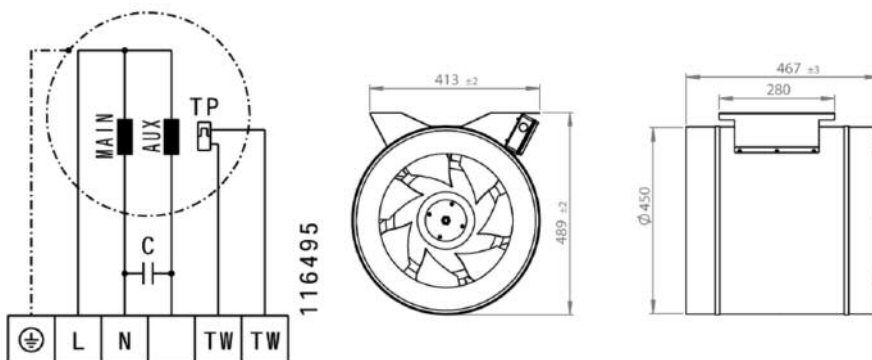
- GS 01 **Isolator Switch**
- FU 15 01 **Frequency Converter**
- FU 15 02 **Frequency Converter**
- VM 450 **Fast Clamps**  
For noise reduction and sealing

Performance Curve EDR 45 E4



230V 75Hz

Operating Point		1	2	3	4	5
<b>Current</b>	I A	2.24	2.03	2.34	2.37	2.23
<b>Power Consumption</b>	P <sub>i</sub> W	420	360	440	450	410
<b>RPM</b>	n 1/min	1430	1450	1440	1440	1440
<b>SPL Inlet</b>	L <sub>WA5</sub> db (A)	-	75	73	73	79
<b>SPL Outlet</b>	L <sub>WA6</sub> db (A)	-	80	79	81	83
<b>SPL casing break out</b>	L <sub>WA2</sub> db (A)	-	72	70	71	72
<b>Voltage</b>	U <sub>N</sub>	230V ~		<b>Speed Control</b>	V	
<b>Current</b>	I <sub>N</sub>	2.4 A		<b>Motor Protection</b>	TAO	
<b>Current</b>	I <sub>max</sub>	3.1 A		<b>Capacitor</b>	12 μF /400 V	
<b>Ambient Temperature</b>	t <sub>U</sub>	80°C		<b>Isolation Case</b>	F	
<b>Medium Temperature</b>	t <sub>F</sub>	80°C		<b>Poles</b>	4	
				<b>Weight</b>	18,4 kg	

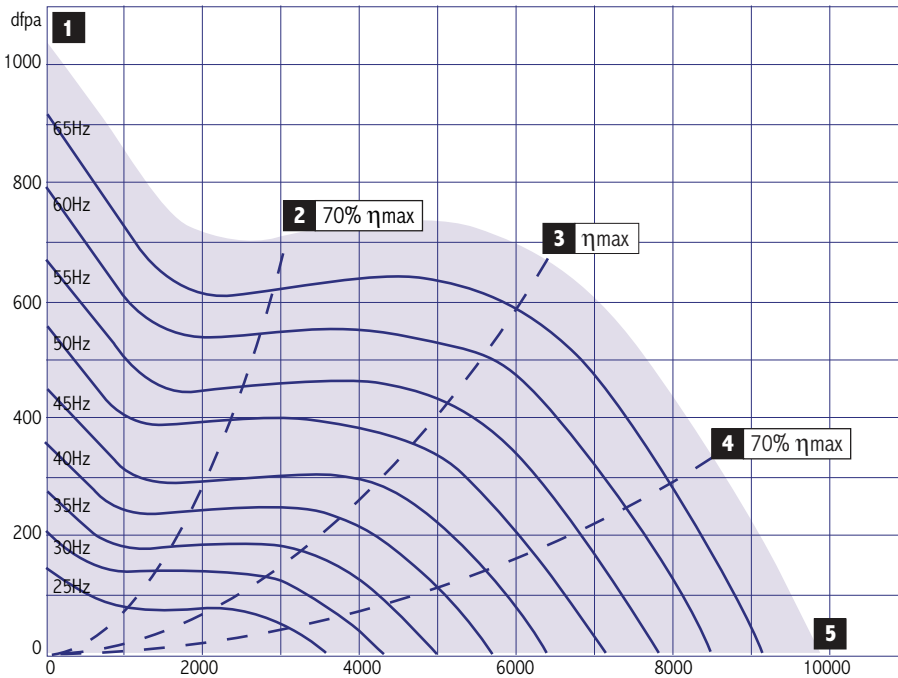


- Diagonal impeller with stator
- Casing of aluminium
- Speed controllable
- Integrated thermal switch
- Including mounting bracket

Accessories for EDR 45 E4

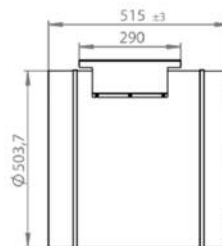
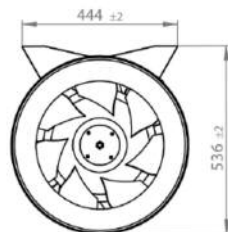
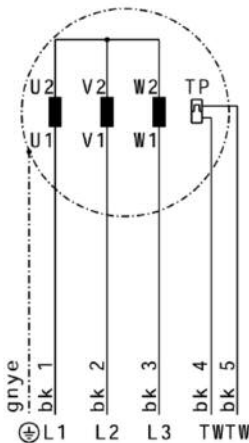
- GS 01  
**Isolator Switch**
- TEM 035  
**5-step Transformer**  
With motor protection
- TES 035  
**7-step Transformer**  
Without motor protection
- VM 450  
**Fast Clamps**  
For noise reduction and sealing

**Performance Curve EDR 50 D4**



230V 70Hz

Operating Point		1	2	3	4	5
<b>Current</b>	I A	6.26	5.76	6.80	6.48	6.00
<b>Power Consumption</b>	P <sub>1</sub> W	1720	1500	1920	1800	1580
<b>RPM</b>	n 1/min	2040	2050	2030	2040	2060
<b>SPL Inlet</b>	L <sub>WA5</sub> db (A)	-	90	83	86	88
<b>SPL Outlet</b>	L <sub>WA6</sub> db (A)	-	94	93	94	94
<b>SPL casing break out</b>	L <sub>WA2</sub> db (A)	-	85	79	81	84
<b>Voltage</b>	U <sub>N</sub> 230V 3~Y	<b>Speed Control</b>		Hz		
<b>Current</b>	I <sub>N</sub> 6.8 A	<b>Motor Protection</b>		TAO		
<b>Current</b>	I <sub>max</sub> 7.1 A	<b>Capacitor</b>				
<b>Ambient Temperature</b>	t <sub>U</sub> 70°C	<b>Isolation Case</b>		F		
<b>Medium Temperature</b>	t <sub>F</sub> 70°C	<b>Poles</b>		4		
		<b>Weight</b>		23.6 kg		

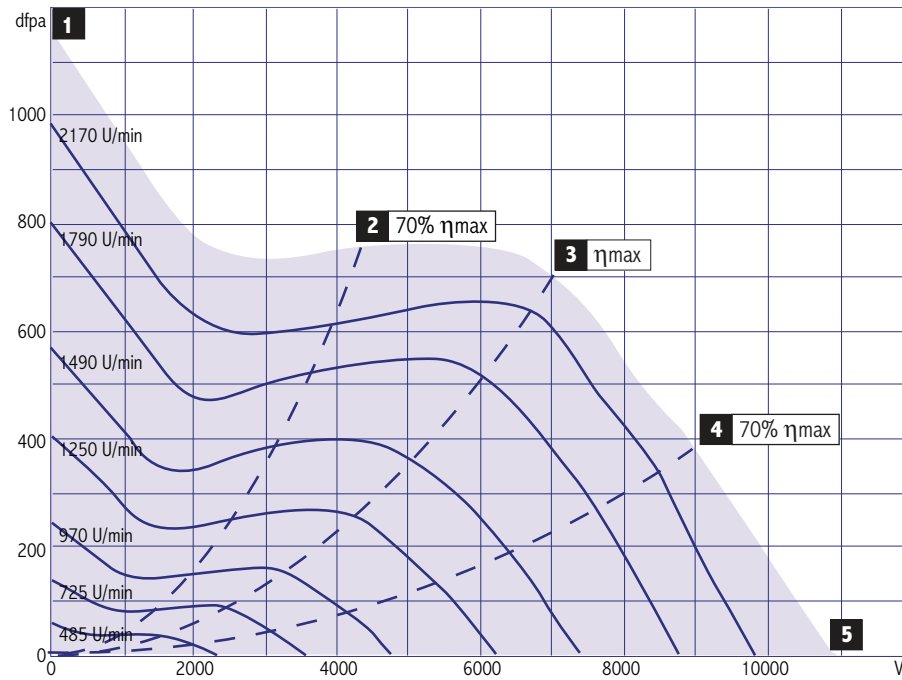


- Diagonal impeller with stator
- Casing of aluminium
- Speed controllable
- Integrated thermal switch
- Including mounting bracket

**Accessories for EDR 50 D4**

- GS 01 **Isolator Switch**
- FU 22 02 **Frequency Converter**
- FU 22 01 **Frequency Converter**
- VM 500 **Fast Clamps**  
For noise reduction and sealing
- SDS 500 **Duct Silencer**  
Rigid

**Performance Curve EDR 50 EC**



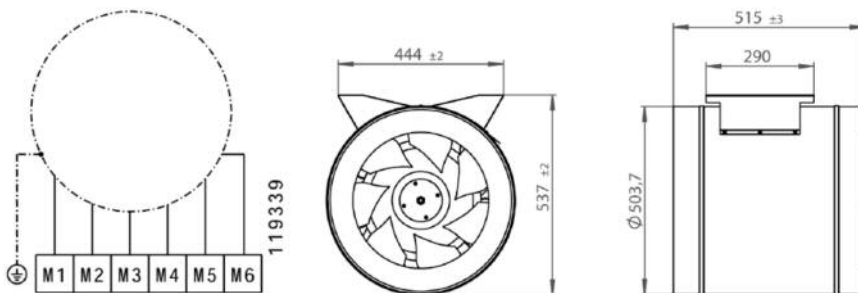
Operating Point		1	2	3	4	5
<b>Current</b>	I A	3.04	2.99	3.11	3.10	3.03
<b>Power Consumption</b>	P <sub>1</sub> W	1780	1760	1850	1840	1800
<b>RPM</b>	n 1/min	2130	2220	2060	2100	2200
<b>SPL Inlet</b>	L <sub>WA5</sub> db (A)	-	93	90	93	94
<b>SPL Outlet</b>	L <sub>WA6</sub> db (A)	-	96	93	97	99
<b>SPL casing break out</b>	L <sub>WA2</sub> db (A)	-	-	-	-	-
<b>Voltage</b>	U <sub>N</sub> 400V 3 ~	<b>Speed Control</b>				
<b>Current</b>	I <sub>N</sub> 3.1 A	<b>Motor Protection</b>				
<b>Current</b>	I <sub>max</sub> 3.3 A	<b>Capacitor</b>				
<b>Ambient Temperature</b>	t <sub>U</sub> 55°C	<b>Isolation Case</b>		F		
<b>Medium Temperature</b>	t <sub>F</sub> 55°C	<b>Poles</b>				
		<b>Weight</b>		21,3 kg		



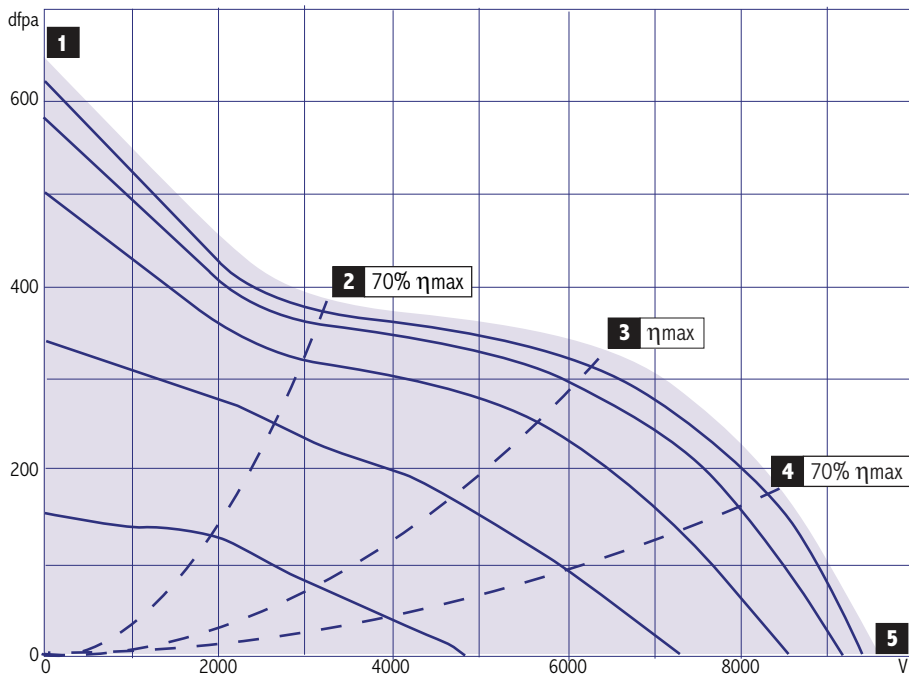
- Diagonal impeller with stator
- Casing of aluminium
- EC-motor
- Including mounting bracket

**Accessories for EDR 50 EC**

- GS 01 **Isolator Switch**
- ECC 20 01 **EC-Controller**
- VM 500 **Fast Clamps**  
For noise reduction and sealing

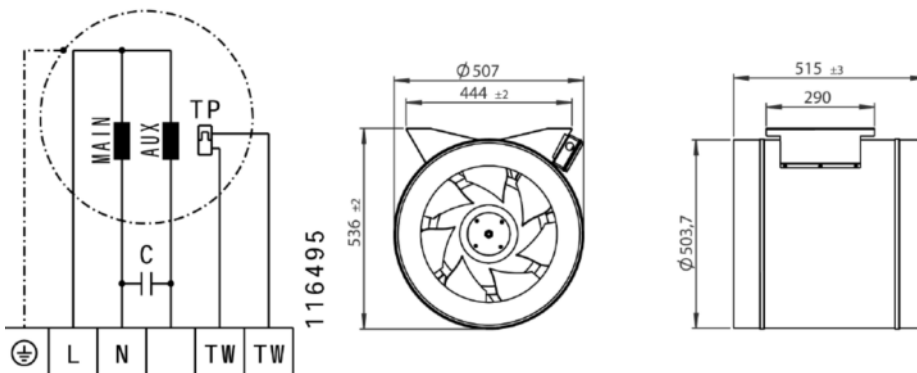


**Performance Curve** EDR 50 E4



230V 50Hz

Operating Point		1	2	3	4	5
<b>Current</b>	I A	2.98	2.64	3.22	3.07	2.83
<b>Power Consumption</b>	P <sub>1</sub> W	650	570	710	680	620
<b>RPM</b>	n 1/min	1350	1380	1340	1360	1380
<b>SPL Inlet</b>	L <sub>WA5</sub> db (A)	-	79	75	77	79
<b>SPL Outlet</b>	L <sub>WA6</sub> db (A)	-	82	83	83	83
<b>SPL casing break out</b>	L <sub>WA2</sub> db (A)	-	79	78	76	78
<b>Voltage</b>	U <sub>N</sub>	230V ~		<b>Speed Control</b>	V	
<b>Current</b>	I <sub>N</sub>	3.2 A		<b>Motor Protection</b>	TAO	
<b>Current</b>	I <sub>max</sub>	3.7 A		<b>Capacitor</b>	16 μF /420 V	
<b>Ambient Temperature</b>	t <sub>U</sub>	80°C		<b>Isolation Case</b>	F	
<b>Medium Temperature</b>	t <sub>F</sub>	80°C		<b>Poles</b>	4	
				<b>Weight</b>	23.2 kg	

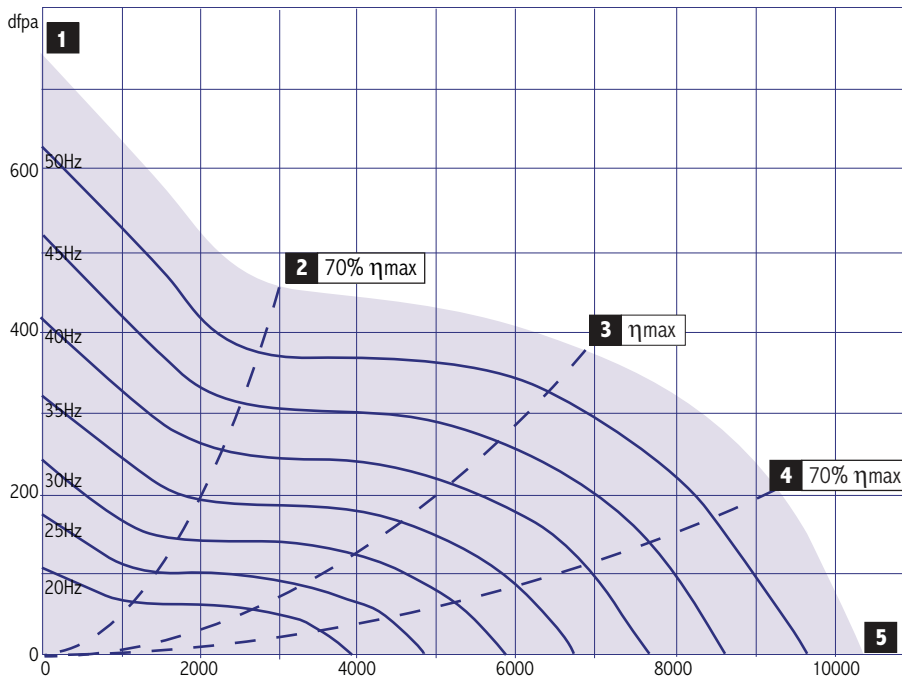


- Diagonal impeller with stator
- Casing of aluminium
- Speed controllable
- Integrated thermal switch
- Including mounting bracket

**Accessories for EDR 50 E4**

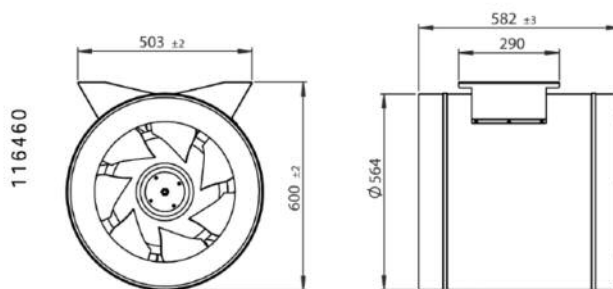
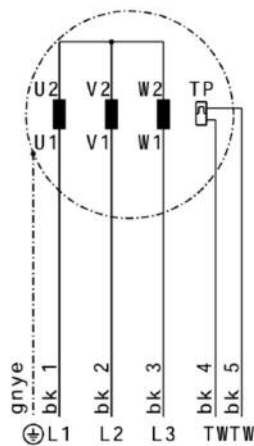
- GS 03 **Isolator Switch**
- TEM 050 **5-step Transformer**  
With motor protection
- TES 050 **7-step Transformer**  
Without motor protection
- VM 500 **Fast Clamps**  
For noise reduction and sealing
- SDS 500 **Duct Silencer**  
Rigid

**Performance Curve** EDR 56 D4



400V 50Hz

Operating Point		1	2	3	4	5
<b>Current</b>	I A	2.51	2.16	2.55	2.64	2.47
<b>Power Consumption</b>	P <sub>1</sub> W	1260	970	1290	1360	1230
<b>RPM</b>	n 1/min	1540	1570	1540	1540	1550
<b>SPL Inlet</b>	L <sub>WA5</sub> db (A)	-	92	87	90	92
<b>SPL Outlet</b>	L <sub>WA6</sub> db (A)	-	96	95	96	96
<b>SPL casing break out</b>	L <sub>WA2</sub> db (A)	-	-	-	-	-
<b>Voltage</b>	U <sub>N</sub> 400V 3 ~Y	<b>Speed Control</b>		Hz		
<b>Current</b>	I <sub>N</sub> 2.4 A	<b>Motor Protection</b>		TAO		
<b>Current</b>	I <sub>max</sub> 2.8 A	<b>Capacitor</b>				
<b>Ambient Temperature</b>	t <sub>U</sub> 80°C	<b>Isolation Case</b>		F		
<b>Medium Temperature</b>	t <sub>F</sub> 80°C	<b>Poles</b>		4		
<b>Weight</b>						28 kg

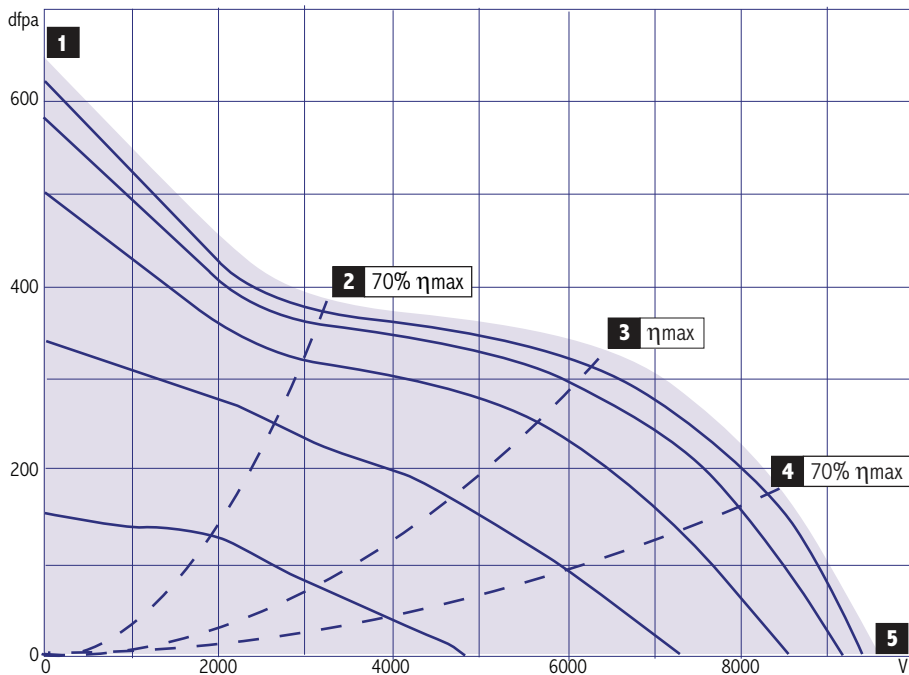


- Attention! Please consider when operating with Frequency Converter
- Diagonal impeller with stator
- Casing of aluminium
- Speed controllable
- Integrated thermal switch
- Including mounting bracket
- Single step mains operation possible 400 V/50Hz (no voltage regulation)

**Accessories for EDR 56 D4**

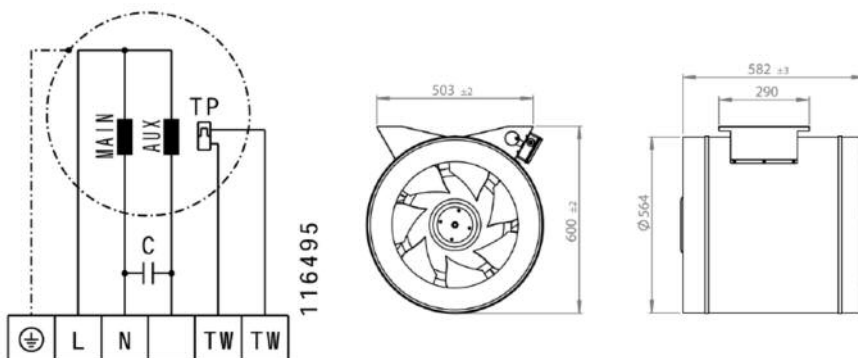
- GS 03 Isolator Switch
- FU 30 02 Frequency Converter
- FU 30 01 Frequency Converter
- VM 560 Fast Clamps  
For noise reduction and sealing

**Performance Curve** EDR 56 E4



230V 50Hz

Operating Point		1	2	3	4	5
<b>Current</b>	I A	4.90	4.17	4.90	5.14	4.76
<b>Power Consumption</b>	P <sub>1</sub> W	1090	940	1120	1160	1090
<b>RPM</b>	n 1/min	1410	1430	1420	1410	1420
<b>SPL Inlet</b>	L <sub>WA5</sub> db (A)	-	87	86	86	91
<b>SPL Outlet</b>	L <sub>WA6</sub> db (A)	-	94	90	93	93
<b>SPL casing break out</b>	L <sub>WA2</sub> db (A)	-	-	-	-	-
<b>Voltage</b>	U <sub>N</sub>	230V ~		<b>Speed Control</b>	V	
<b>Current</b>	I <sub>N</sub>	5.2 A		<b>Motor Protection</b>	TAO	
<b>Current</b>	I <sub>max</sub>	6.7 A		<b>Capacitor</b>	40 μF /400 V	
<b>Ambient Temperature</b>	t <sub>U</sub>	80°C		<b>Isolation Case</b>	F	
<b>Medium Temperature</b>	t <sub>F</sub>	80°C		<b>Poles</b>	4	
				<b>Weight</b>	38 kg	

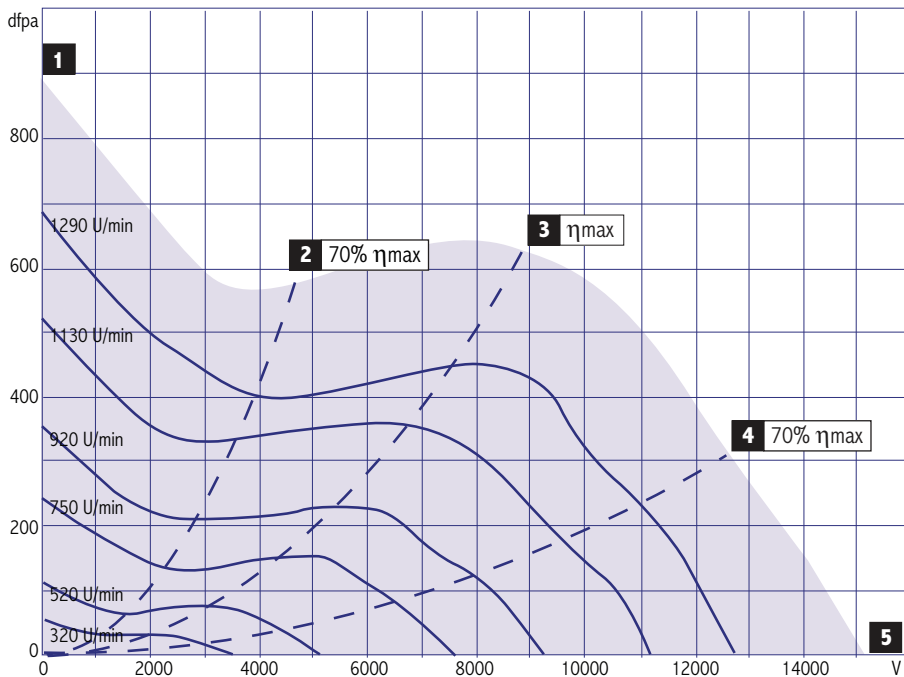


- Diagonal impeller with stator
- Casing of aluminium
- Speed controllable
- Integrated thermal switch
- Including mounting bracket

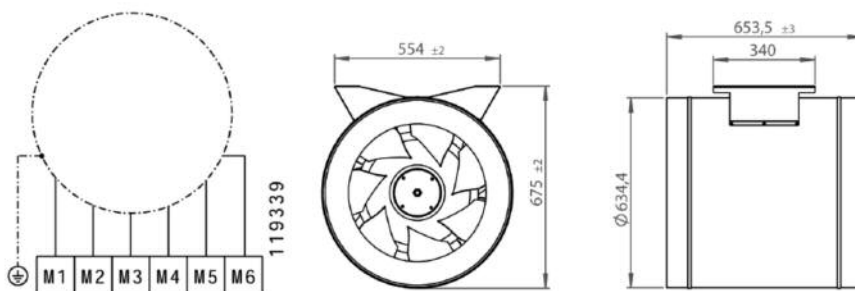
**Accessories for EDR 56 E4**

- GS 03  
**Isolator Switch**
- TEM 075  
**5-step Transformer**  
With motor protection
- TES 075  
**7-step Transformer**  
Without motor protection
- VM 560  
**Fast Clamps**  
For noise reduction and sealing

Performance Curve EDR 63 EC



Operating Point		1	2	3	4	5
<b>Current</b>	I A	2.94	2.38	3.24	3.26	3.00
<b>Power Consumption</b>	P <sub>1</sub> W	1920	1490	2110	2130	1960
<b>RPM</b>	n 1/min	1470	1490	1490	1480	1480
<b>SPL Inlet</b>	L <sub>WA5</sub> db (A)	-	93	90	93	94
<b>SPL Outlet</b>	L <sub>WA6</sub> db (A)	-	96	93	97	99
<b>SPL casing break out</b>	L <sub>WA2</sub> db (A)	-	-	-	-	-
<b>Voltage</b>	U <sub>N</sub> 400V 3 ~	<b>Speed Control</b>				
<b>Current</b>	I <sub>N</sub> 3.6 A	<b>Motor Protection</b>				
<b>Current</b>	I <sub>max</sub> 3.8 A	<b>Capacitor</b>				
<b>Ambient Temperature</b>	t <sub>U</sub> 50°C	<b>Isolation Case</b>		F		
<b>Medium Temperature</b>	t <sub>F</sub> 50°C	<b>Poles</b>				
<b>Weight</b>					38,4 kg	

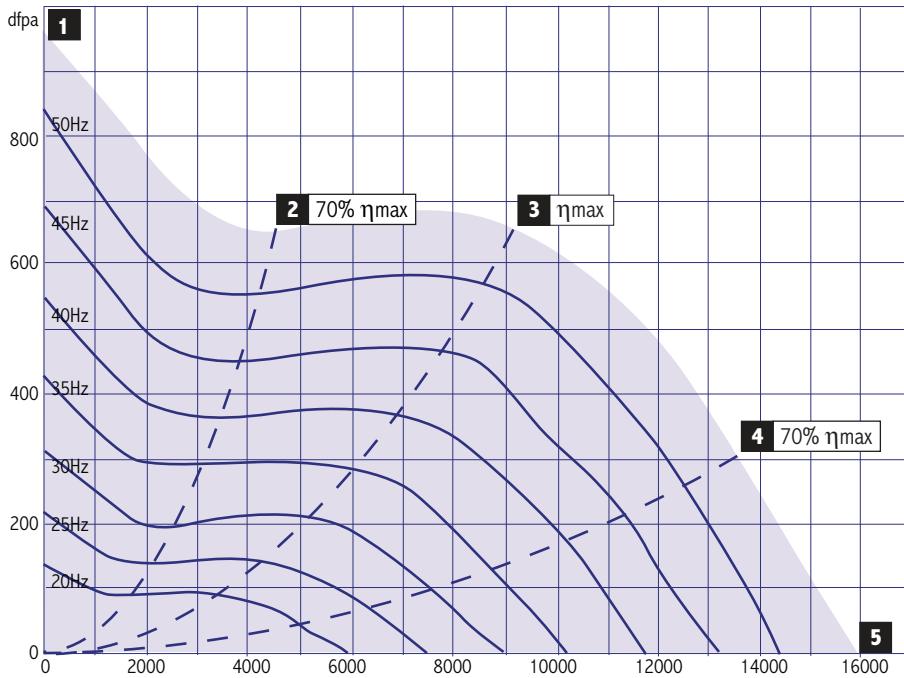


- Diagonal impeller with stator
- Casing of aluminium
- EC-motor
- Including mounting bracket

Accessories for EDR 63 EC

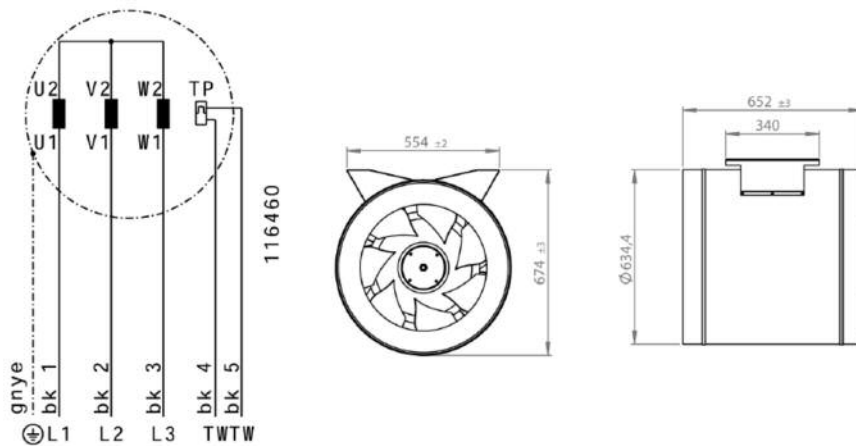
- GS 03  
**Isolator Switch**
- ECC 30 01  
**EC-Controller**
- VM 630  
**Fast Clamps**  
For noise reduction and sealing

**Performance Curve EDR 63 D4**



400V 50Hz

Operating Point		1	2	3	4	5
<b>Current</b>	I A	4.59	3.99	4.90	4.88	4.45
<b>Power Consumption</b>	P <sub>1</sub> W	2360	1890	2620	2590	2290
<b>RPM</b>	n 1/min	1550	1590	1560	1560	1580
<b>SPL Inlet</b>	L <sub>WA5</sub> db (A)	-	93	90	93	94
<b>SPL Outlet</b>	L <sub>WA6</sub> db (A)	-	96	93	97	99
<b>SPL casing break out</b>	L <sub>WA2</sub> db (A)	-	-	-	-	-
<b>Voltage</b>	U <sub>N</sub> 400V 3 ~Y	<b>Speed Control</b>		Hz		
<b>Current</b>	I <sub>N</sub> 4.5 A	<b>Motor Protection</b>		TAO		
<b>Current</b>	I <sub>max</sub> 5.4 A	<b>Capacitor</b>				
<b>Ambient Temperature</b>	t <sub>U</sub> 70°C	<b>Isolation Case</b>		F		
<b>Medium Temperature</b>	t <sub>F</sub> 70°C	<b>Poles</b>		4		
		<b>Weight</b>		39,3 kg		

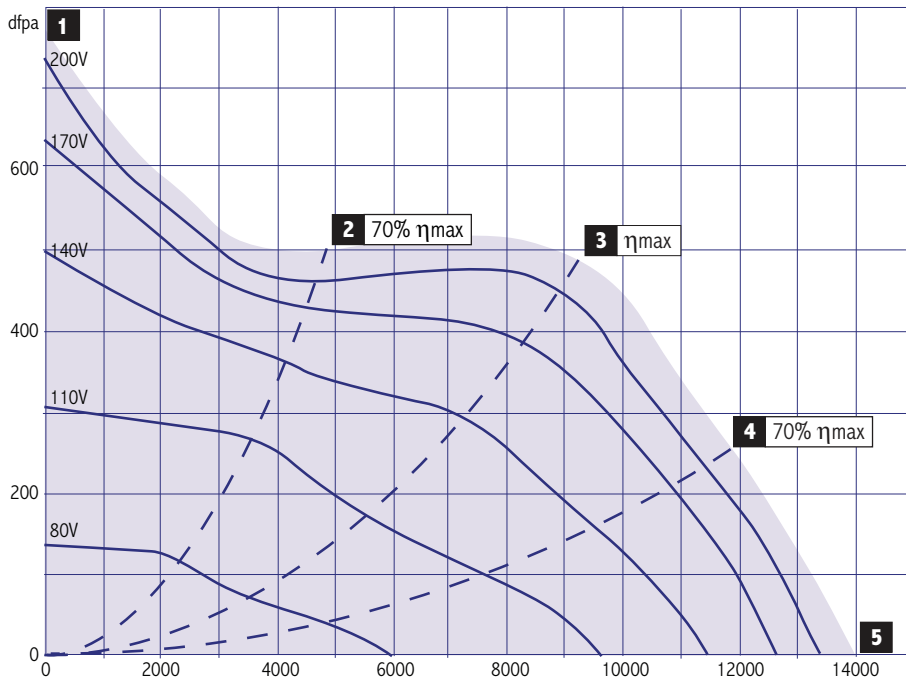


- Attention! Please consider when operating with Frequency Converter
- Diagonal impeller with stator
- Casing of aluminium
- Speed controllable
- Integrated thermal switch
- Including mounting bracket
- Single step mains operation possible 400 V/50Hz (no voltage regulation)

**Accessories for EDR 63 D4**

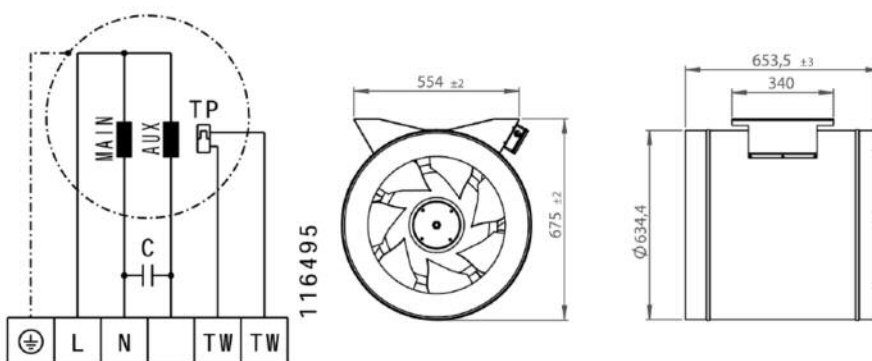
- GS 03 **Isolator Switch**
- FU 30 02 **Frequency Converter**
- FU 30 01 **Frequency Converter**
- VM 630 **Fast Clamps**  
For noise reduction and sealing

**Performance Curve EDR 63 E4**



230V 50Hz

Operating Point		1	2	3	4	5
<b>Current</b>	I A	8.88	7.63	9.64	9.25	8.47
<b>Power Consumption</b>	P <sub>1</sub> W	1940	1670	2140	2050	1860
<b>RPM</b>	n 1/min	1370	1410	1370	1380	1400
<b>SPL Inlet</b>	L <sub>WA5</sub> db (A)	-	92	87	90	92
<b>SPL Outlet</b>	L <sub>WA6</sub> db (A)	-	96	95	96	96
<b>SPL casing break out</b>	L <sub>WA2</sub> db (A)	-	-	-	-	-
<b>Voltage</b>	U <sub>N</sub>	230V ~		<b>Speed Control</b>	V	
<b>Current</b>	I <sub>N</sub>	9.6 A		<b>Motor Protection</b>	TAO	
<b>Current</b>	I <sub>max</sub>	11.4 A		<b>Capacitor</b>	60 μF /400 V	
<b>Ambient Temperature</b>	t <sub>U</sub>	50°C		<b>Isolation Case</b>	F	
<b>Medium Temperature</b>	t <sub>F</sub>	50°C		<b>Poles</b>	4	
				<b>Weight</b>	43,1 kg	

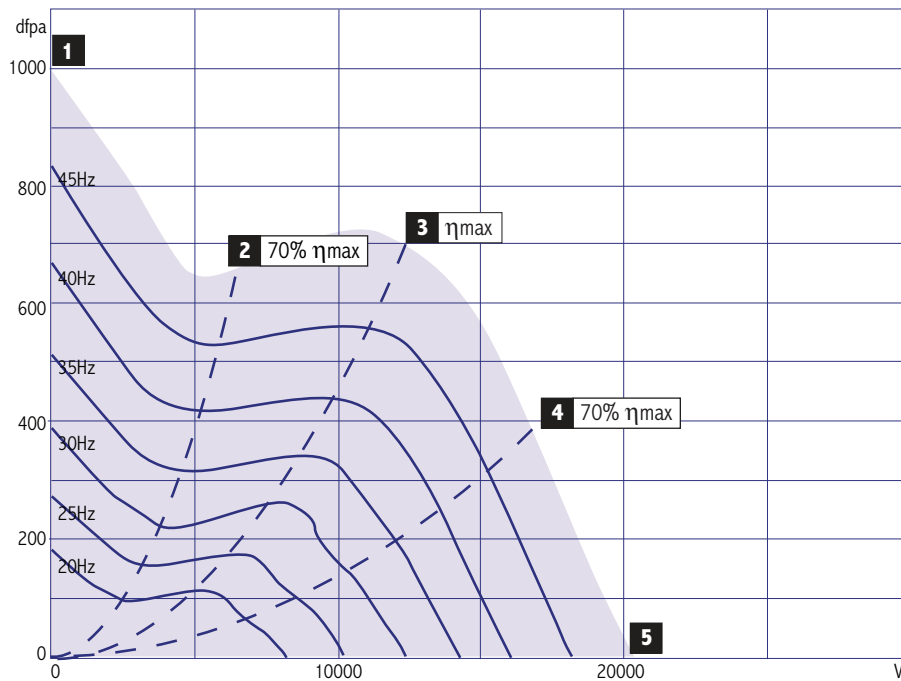


- Diagonal impeller with stator
- Casing of aluminium
- Speed controllable
- Integrated thermal switch
- Including mounting bracket

**Accessories for EDR 63 E4**

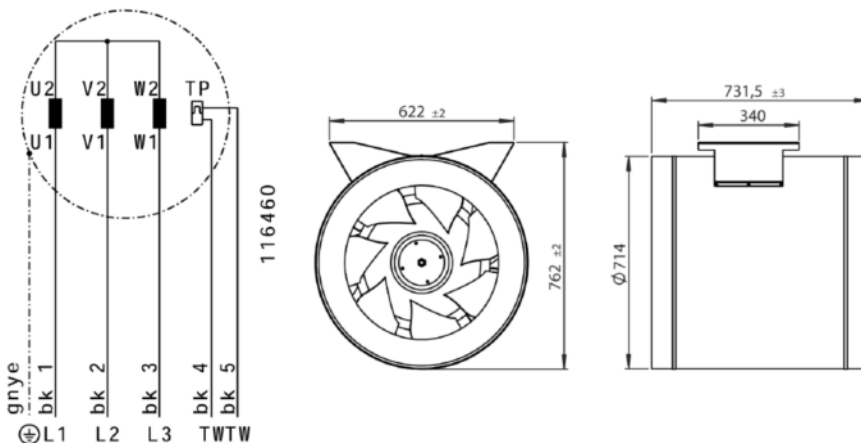
- GS 01 **Isolator Switch**
- TEM 130 **5-step Transformer**  
With motor protection
- TES 130 **7-step Transformer**  
Without motor protection
- VM 630 **Fast Clamps**  
For noise reduction and sealing

**Performance Curve EDR 71 D4**



400V 50Hz

Operating Point		1	2	3	4	5
<b>Current</b>	I A	6.45	5.57	6.98	7.10	6.90
<b>Power Consumption</b>	P <sub>1</sub> W	3230	2570	3580	3600	3330
<b>RPM</b>	n 1/min	1420	1450	1360	n def	1080
<b>SPL Inlet</b>	L <sub>WA5</sub> db (A)	-	99	94	95	95
<b>SPL Outlet</b>	L <sub>WA6</sub> db (A)	-	102	96	98	101
<b>SPL casing break out</b>	L <sub>WA2</sub> db (A)	-	-	-	-	-
<b>Voltage</b>	U <sub>N</sub> 400V 3~Y	<b>Speed Control</b>		Hz		
<b>Current</b>	I <sub>N</sub> 7.3 A	<b>Motor Protection</b>		TAO		
<b>Current</b>	I <sub>max</sub> 7.7 A	<b>Capacitor</b>				
<b>Ambient Temperature</b>	t <sub>U</sub> 55°C	<b>Isolation Case</b>		F		
<b>Medium Temperature</b>	t <sub>F</sub> 55°C	<b>Poles</b>		4		
<b>Weight</b>						49 kg



- Attention! Please consider when operating with Frequency Converter
- Diagonal impeller with stator
- Casing of aluminium
- Speed controllable
- Integrated thermal switch
- Including mounting bracket
- Single step mains operation possible 400 V/50Hz (no voltage regulation)

**Accessories for EDR 71 D4**

- GS 03  
**Isolator Switch**
- FU 40 02  
**Frequency Converter**
- FU 40 01  
**Frequency Converter**
- VM 710  
**Fast Clamps**  
For noise reduction and sealing